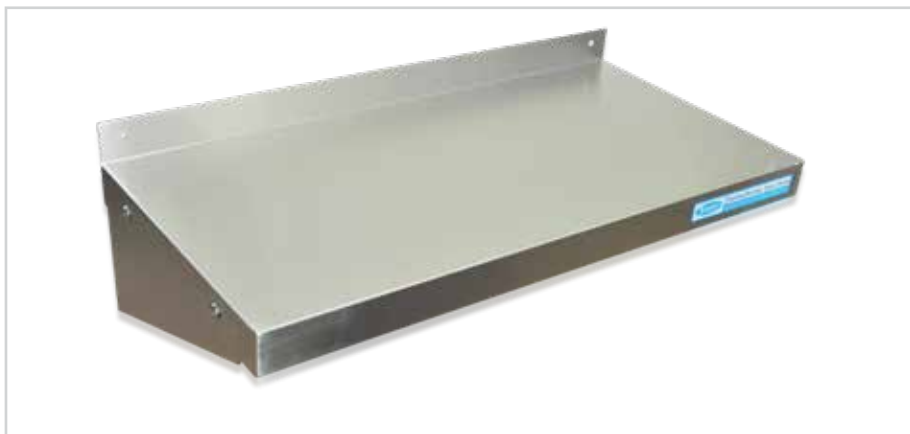


# 300 mm FLAT WALL MOUNTED SHELVES



## 300 SERIES FLAT SHELF

### Overall Dimensions:

Shelf: 600 (w) x 300 (d) x 40mm (h)  
Bracket: 190mm (h)

**Splashback Height:** 40mm (h)

**Load Capacity:** see below

### Shipping Dimensions:

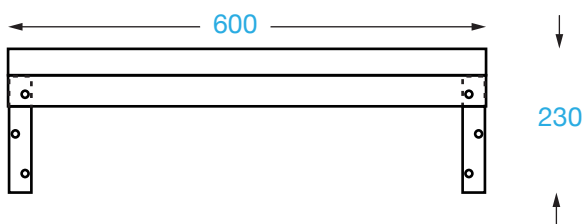
650 (w) x 370 (d) x 90mm (h)

**Shipping Weight:** 3 kg

### Material:

Full 430 grade stainless steel

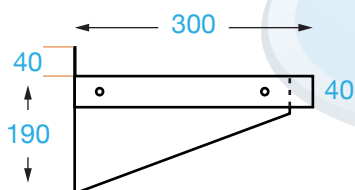
### FRONT




### TOP



### SIDE



**PRODUCT CODE:** SHSS6030

 Brayco Stainless Steel is made from 95% recycled materials

### FEATURES AND BENEFITS

- **Construction:** Stainless steel.
- **Wall Brackets:** 2 wall brackets with fixings to the shelf (wall fixings not supplied). Longer shelves have a middle bracket for extra support.
- **Supplied Flat Pack:** Simple assembly required

#### Also available:

- **Other Sizes:** 900, 1200 1500, 1800 and 2000 mm
- **Corner Shelf:** Make maximum use of your wall space with a corner shelf.
- **450 mm Deep Shelves:** Deep enough for a microwave.



It is important that your stainless steel is kept clean to extend the lifetime of the product.

### LOAD CAPACITY

These shelves can take a LOT of weight. However, the exact weight rating of each wall shelf depends primarily on the following factors –

- How it is attached to a wall (e.g. the type/size of screws, bolts and/or wall plugs)
- The type of wall you are fixing the shelf to – plasterboard, concrete, single or double wall, etc.

A shelf mounted to something solid (like wall studs or masonry block) will maintain a much higher weight capacity than a shelf fixed to Gyprock, for example.

Please Note: Longer wall shelves have a middle bracket for extra strength, please ensure you fit these.



**Brisbane • Sydney • Melbourne • Hobart • Adelaide • Perth • Auckland**  
For more info please contact your nearest Brayco Branch 1300 272 926 | [brayco.com.au](http://brayco.com.au)