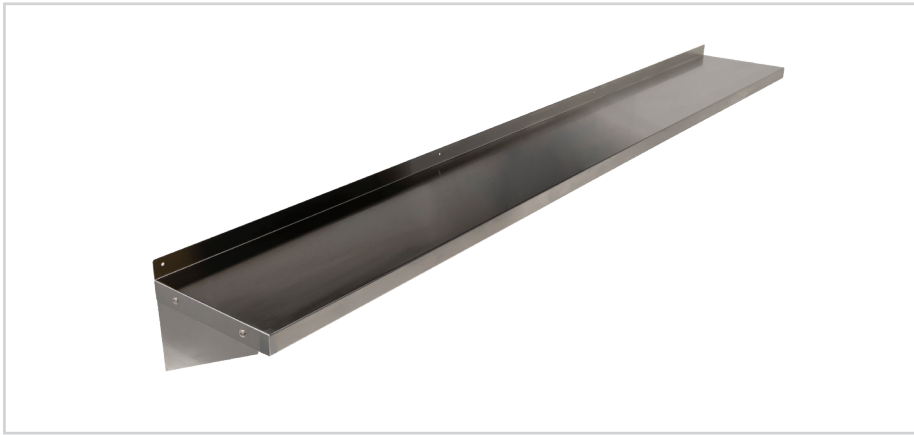


300 mm FLAT WALL MOUNTED SHELVES



300 SERIES FLAT SHELF

Overall Dimensions:

Shelf: 2400 (w) x 300 (d) x 40mm (h)

Bracket: 190mm (h)

Splashback Height: 40mm (h)

Load Capacity: see below

Shipping Dimensions:

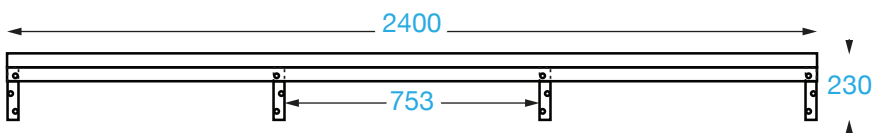
2440 x 340 x 90mm

Shipping Weight: 11.2kg

Material:

Full 430 grade stainless steel

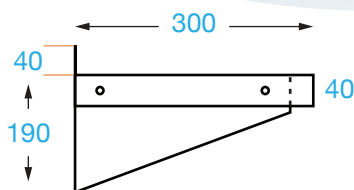
FRONT



TOP




SIDE



⚠ It is important that your stainless steel is kept clean to extend the lifetime of the product.

PRODUCT CODE: SHSS24030

 Brayco Stainless Steel is made from 95% recycled materials

FEATURES AND BENEFITS

- **Construction:** Stainless steel.
- **Wall Brackets:** 4 wall brackets, supplied with screws for secure attachment. Wall fixing not supplied.
- **Supplied Flat Pack:** Simple assembly required

Also available:

- **Other Sizes:** 400, 600, 900, 1200, 1500, 1800 and 2000 mm
- **Corner Shelf:** Make maximum use of your wall space with a corner shelf.
- **450 mm Deep Shelves:** Deep enough for a microwave.

LOAD CAPACITY

These shelves can take a LOT of weight. However, the exact weight rating of each wall shelf depends primarily on the following factors –

- How it is attached to a wall (e.g. the type/size of screws, bolts and/or wall plugs)
- The type of wall you are fixing the shelf to – plasterboard, concrete, single or double wall, etc.

A shelf mounted to something solid (like wall studs or masonry block) will maintain a much higher weight capacity than a shelf fixed to Gyprock, for example.

Please Note: Longer wall shelves have a middle bracket for extra strength, please ensure you fit these.



Brisbane • Sydney • Melbourne • Hobart • Adelaide • Perth • Auckland
For more info please contact your nearest Brayco Branch 1300 272 926 | brayco.com.au