

# 300 mm PIPE WALL MOUNTED SHELVES



## 300 SERIES PIPE SHELF

### Overall Dimensions:

Shelf: 600 (w) x 300 (d) x 25 mm (h)  
Bracket: 200 mm (h)

**Load Capacity:** see below

### Shipping Dimensions:

650 (w) x 250 (d) x 60 mm (h)

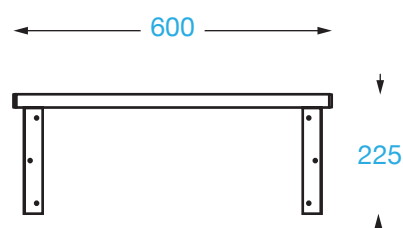
**Shipping Weight:** 3 kg

### Material:

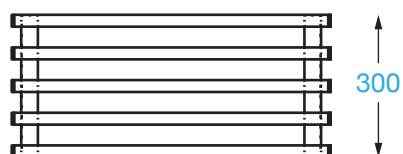
Top Bars: 201 grade stainless steel

Brackets: 430 grade stainless steel

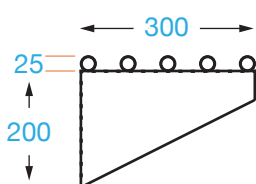
### FRONT



### TOP



### SIDE



**PRODUCT CODE:** PIPE6030



Brayco Stainless Steel is made from 95% recycled materials

### FEATURES AND BENEFITS

- **Construction:** Stainless steel.
- **Wall Brackets:** 2 wall brackets with fixings to the shelf (wall fixings not supplied).
- **Supplied Flat Pack:** Simple assembly required.
- **Other Sizes Available:** 900, 1200, 1500, and 1800 mm



It is important that your stainless steel is kept clean to extend the lifetime of the product.

### LOAD CAPACITY

These shelves can take a LOT of weight. However, the exact weight rating of each wall shelf depends primarily on the following factors –

- How it is attached to a wall (e.g. the type/size of screws, bolts and/or wall plugs)
- The type of wall you are fixing the shelf to – plasterboard, concrete, single or double wall, etc.

A shelf mounted to something solid (like wall studs or masonry block) will maintain a much higher weight capacity than a shelf fixed to Gyprock, for example.

Please Note: Longer wall shelves have a middle bracket for extra strength, please ensure you fit these.



**Brisbane • Sydney • Melbourne • Hobart • Adelaide • Perth • Auckland**  
For more info please contact your nearest Brayco Branch 1300 272 926 | [brayco.com.au](http://brayco.com.au)