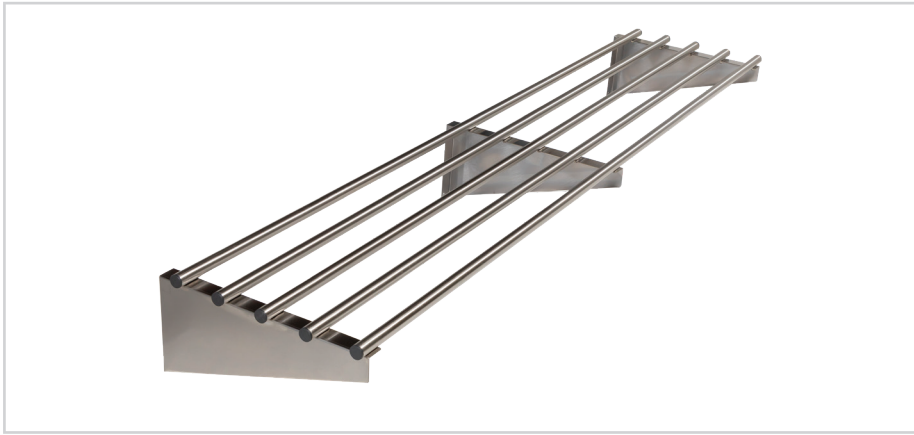


450 mm PIPE WALL MOUNTED SHELVES



450 SERIES PIPE SHELF

Overall Dimensions:

Shelf: 2000 (w) x 450 (d) x 25 mm (h)

Bracket: 200 mm (h)

Load Capacity: see below

Shipping Dimensions:

2440 x 240 x 50mm

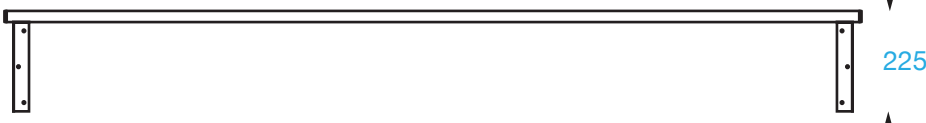
Shipping Weight: 11kg

Material:

Top Bars: 201 grade stainless steel

Brackets: 430 grade stainless steel

FRONT



PRODUCT CODE: PIPE20045



Brayco Stainless Steel is made from 95% recycled materials

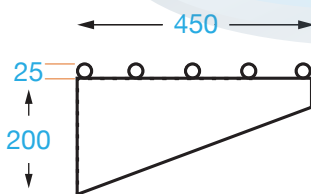
TOP



FEATURES AND BENEFITS

- **Construction:** Stainless steel.
- **Wall Brackets:** 2 wall brackets, supplied with screws to secure the 5 pipes. Wall fixing not supplied.
- **Supplied Flat Pack:** Simple assembly required.
- **Other Sizes Available:** 600, 900, 1200, 1500, 1800 and 2400 mm

SIDE



It is important that your stainless steel is kept clean to extend the lifetime of the product.

LOAD CAPACITY

These shelves can take a LOT of weight. However, the exact weight rating of each wall shelf depends primarily on the following factors –

- How it is attached to a wall (e.g. the type/size of screws, bolts and/or wall plugs)
- The type of wall you are fixing the shelf to – plasterboard, concrete, single or double wall, etc.

A shelf mounted to something solid (like wall studs or masonry block) will maintain a much higher weight capacity than a shelf fixed to Gyprock, for example.



Brisbane • Sydney • Melbourne • Hobart • Adelaide • Perth • Auckland
For more info please contact your nearest Brayco Branch 1300 272 926 | brayco.com.au